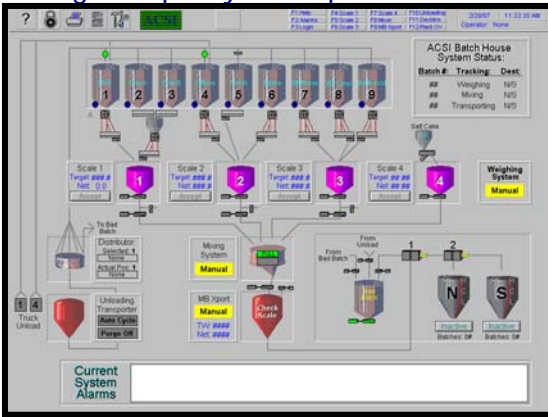




Advanced Batching Control

In batching, it is important to consistently provide the highest quality batch possible to the process while simultaneously meeting the production requirements. The ability to meet these objectives depends upon the interrelationship between the mechanical equipment and the control system in the batch plant. The control system must optimize the performance of the mechanical system by consistently monitoring the batch plant performance and automatically adjusting the control parameters. This strategy adapts to different material flow characteristics and feeding devices to ensure materials are weighed to the highest possible accuracy in the shortest possible time.



The ACSI batch system will operate with **minimal operator attention** making batches as requested to satisfy demand. The control system will operate unsupervised under normal operating conditions.

Weighing Strategy

The ACSI batch control system incorporates a proprietary Preact Adjustment Algorithm for weighing control. The ACSI-developed algorithm ensures materials are weighed accurately, monitors the final weight of each material and, if necessary, makes adjustments to compensate for feeder degradation and material flow changes. The process is entirely automatic.

Precise Weighing Control

Unlike a traditional system, the ACSI controller minimizes the number of jogs needed to get material weight as close as possible to the target weight with the goal of eliminating the jog cycle altogether. The ACSI Automatic Preact Adjustment Algorithm takes the guesswork out of the process by recording and statistically analyzing weighing performance. Deviations from target are recorded and accumulated. If the deviations start to trend out of tolerance and reach a predetermined value, the average of the over or under tolerance is added to or subtracted from the preact weight. With this adjustment made, the next weighed amount should be on target. The automatic preact adjustment strategy enables the control system to continuously adapt to changing material flow characteristics and different feeding devices.

Features

Benefits

<p>Minimizes/eliminates jog cycle</p> <p>Improves weighing accuracy</p> <p>Minimizes/eliminates out of tolerance alarms</p>	<p>Maximizes process efficiency</p> <p>Increases cycle speed and overall throughput</p> <p>Reduces equipment wear/tear</p> <p>Ensures homogeneity from batch to batch</p> <p>Decreases material waste</p> <p>Corrects to tighter tolerances</p> <p>Reduces need for operator intervention</p>
---	---

ACSI Toledo
8750 Resource Drive
Sylvania, OH 43560 USA
++1-419-843-4820

ACSI Europe
1 The Byres
Wicklesham Lodge Farm
Farringdon.
OXON
SN7 7PN . UK.
++44-1367-245475

Check out our website at
www.acsitolledo.com



ACSI Training Series: Basics of HMI Application

ACSI is currently offering a 3 day training course on the basics of HMI applications at our Sylvania, Ohio location.

This training class is intended for Plant Engineers, Maintenance Technicians, and Electricians who need to maintain, troubleshoot, backup or make modifications to an existing Wonderware® InTouch application. Trainees may bring a copy of an existing InTouch application from their facility to use during class labs. (For daily training agenda, please email katiemarconi@acsitoledo.com.)



Dates: Flexible

Cost: \$1,500.00 per person

To register or request additional information please contact: Katie Marconi

Phone: (419) 843-4820

Email: katiemarconi@acsitoledo.com

Quarterly Newsletter Company Survey Question

"Tell us about a celebrity encounter"

I saw Dan Weldon at the Cincinnati airport and talked to him for a while. He was a good driver but not my favorite, I sort of considered him a rival driver. After we talked I realized he was a really nice guy. ~Jon Nash

"Who loves ya, baby?" I had just checked into a hotel in Los Angeles, California and was waiting for the elevator when Kojak (Telly Savalas) walks out. He smiled and said Hi. No Lollipop. ~Ron Finch

I met Diane Lane while she was shooting Unfaithful. It lead to a wonderful relationship, she and I under the Tuscan sun. Richard Gere is nowhere around. ~Steve Nixon

In Los Angeles, while attending my daughter's dance competition, we went shopping on Rodeo Drive. We went out the back door of Ralph Lauren and while waiting for our friends to meet us, "Girls Next Door" star Bridget Marquardt was standing next to us for about ten minutes. She was talking on her cell phone the entire time. A red Porsche with "BUNNY" license plate arrived from valet and she got in and drove away! ~Diana Davis

I saw John Malkovich walking down the street in Chicago...he's pretty short in real life!
~Katie Marconi

Meet ACSI's Scott Tibai

Job at ACSI: Project Engineer

Hometown: Newport, Michigan

Background: B.S. Electrical Engineering

Started with ACSI: December 2010

Interests: Cars, Computers, Sports, Movies, and Music

Favorite Movies: Transformers and Super Troopers

Favorite Summertime Time Activity: Having a barbeque, running or sports, anything outside in the sun

Best thing about working at ACSI: The working environment



2012 Events

October 1-3, 2012
The Glass Problems Conference
Hilton Cincinnati Netherland Plaza
Cincinnati, Ohio

October 23-26, 2012
Glasstec
The Dusseldorf Fairgrounds
Dusseldorf, Germany
www.glasstec-online.com



We look forward to seeing you at the upcoming shows!

The 72nd Conference on Glass Problems

The 72nd Conference on Glass Problems, which took place on October 18th & 19th at the *Fawcett Center For Tomorrow* on Ohio State University's campus, was once again attended by several representatives from ACSI. The Conference attracted around 350 delegates and ACSI enjoyed its new table top location along the main aisle of the conference center. As in past conferences, we were also able to attend several interesting sessions about advances in the industry.

The camaraderie continued into the evening with our now-famous Margarita-ville. As always, we were delighted to host a number of customers and delegates at the ACSI Hospitality Booth.

As announced at the 2011 conference, The 73rd Conference on Glass Problems will not be held in Columbus, Ohio this fall as in previous years. The conference, which is scheduled for October 2-3, 2012, will take place in Cincinnati Ohio at the Cincinnati Netherland Plaza. The location has been changed due to planned construction at the Columbus site.



It is being organized for the first time by the Glass Manufacturing Industry Council and Alfred University. The conference will be led by Program Director Dr. S K Sundaram, Professor of Material Science & Engineering, Alfred University and Robert Lipetz, GMIC Executive Director. GMIC will be responsible for managing the venue, registration, and accommodations, while Alfred University, along with an Advisory Board, will be responsible for the coordination of the conference program. As in previous years, vendors will be able to purchase space for tabletop exhibition during the daily conference. The American Ceramic Society will be assuming tabletop organization.



Thanks to all our customers - old and new - who joined us during Glass Problems and look for us at Glasstec in Dusseldorf, Germany and the 73rd Conference on Glass Problems in 2012.

ACSI USA
8750 Resource Park Drive
Sylvania, OH 43560 USA
Phone: 419-843-4820
Fax: 419-843-4821
Email: stevenixon@acsitoledo.com

ACSI

ACSI Europe Ltd.
1 The Byres
Wicklesham Lodge Farm,
Farrington.
OXON. SN7 7PN. UK
Phone: +44-1367-245479
Email: davedouglas@acsieurope.com

improving performance
through advanced control solutions

This Newsletter is published by ACSI 4 times per year.
All rights reserved.
Editor: Katherine Marconi, 419.843.4820
katiemarconi@acsitoledo.com.
To unsubscribe, email a request to the Editor.